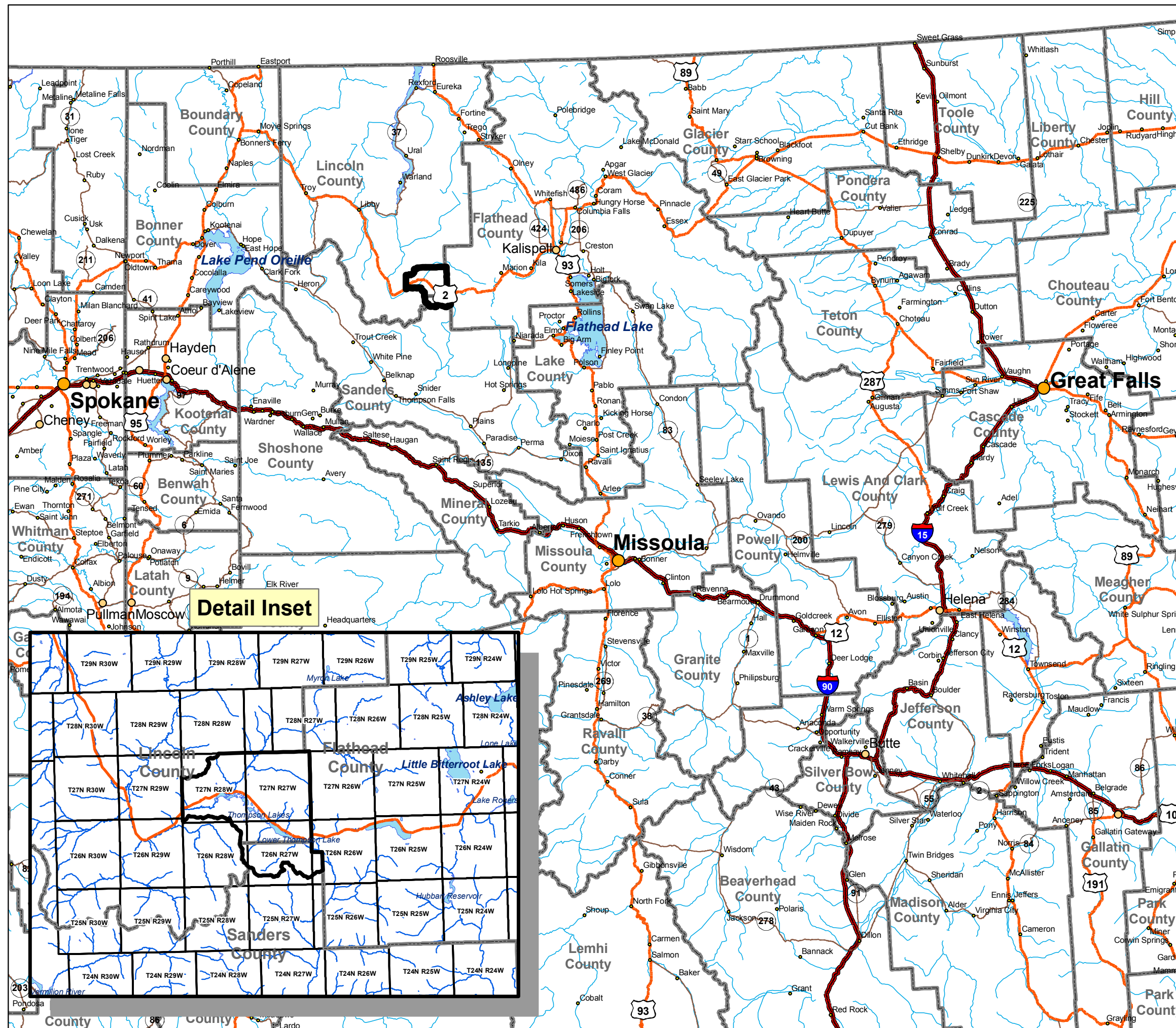


Thompson Chain of Lakes Neighborhood Plan

Regional Vicinity Map



Legend

- Planning Boundary
- County Line

Road Type

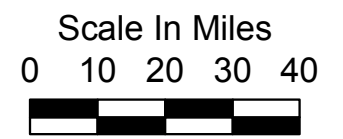
- Interstate
- US Highway
- State Highway

Lakes/Reservoirs

- Lakes/Reservoirs
- River/Perennial Stream

Cities/Towns

- Less 10,000
- 10,000 - 49,999
- 50,000 - 249,999
- 250,000 - 499,999
- 500,000 Plus



A-1

Thompson Chain of Lakes Neighborhood Plan

Conceptual Land Use Designation Map

Land Use Type	Abbr	Ave. Density
Low Density	LD	1:40
Transition Density	TD	1:20
Rural Density	RD	1:5
Community Density	CD	1:1
Neighborhood Commercial	NC	NA
Light Industrial	LI	NA
Public Recreation	PR	NA

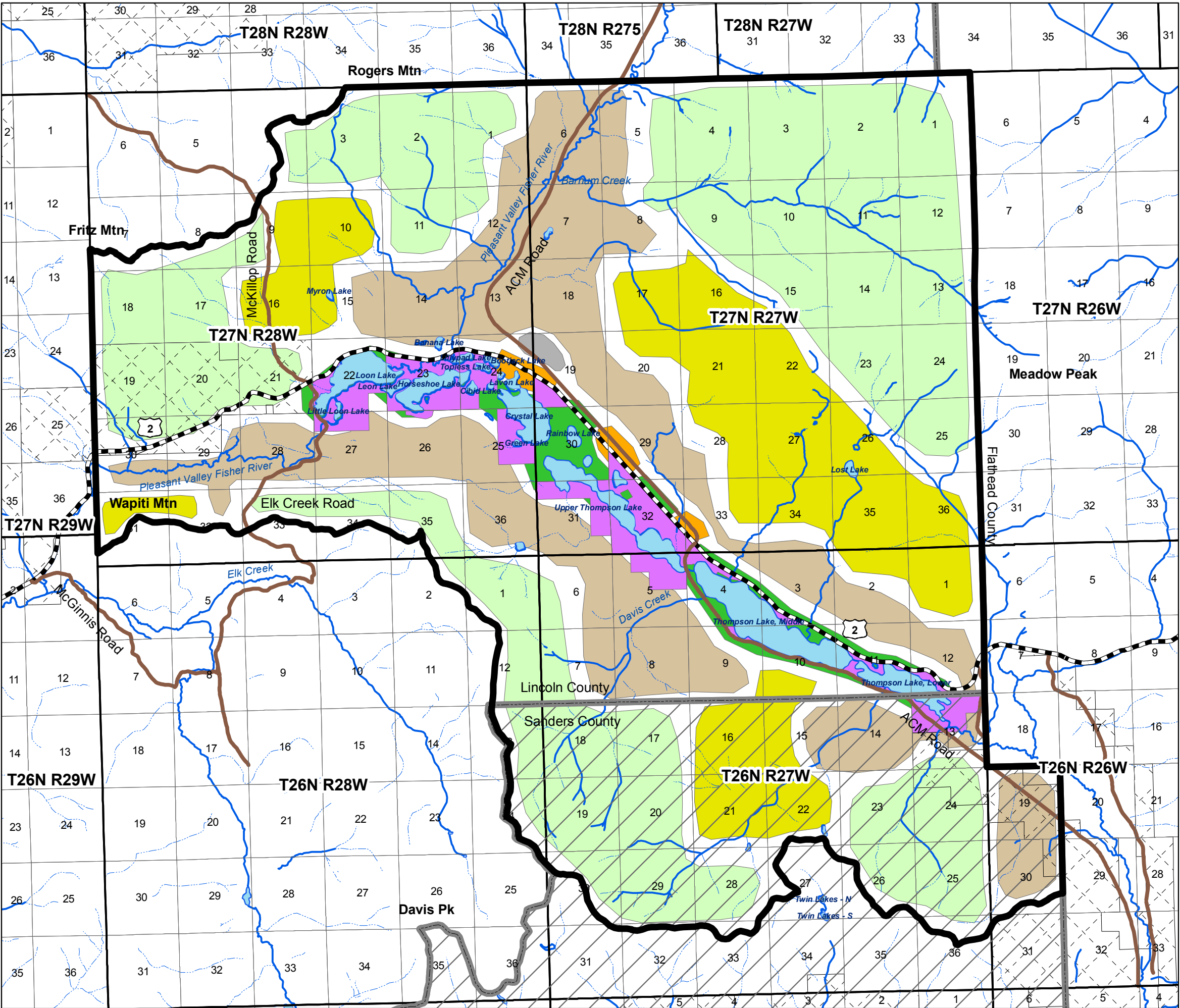
Legend

Planning Boundary	LD
County Line	TD
US Highway 2	RD
Major Roads	CD
Lakes	NC
River/Perennial Stream	LI
Intermittent Stream	PR
Conservation Easements	
Sanders County	

That portion of Plan area in Sanders County is for informational purposes only.

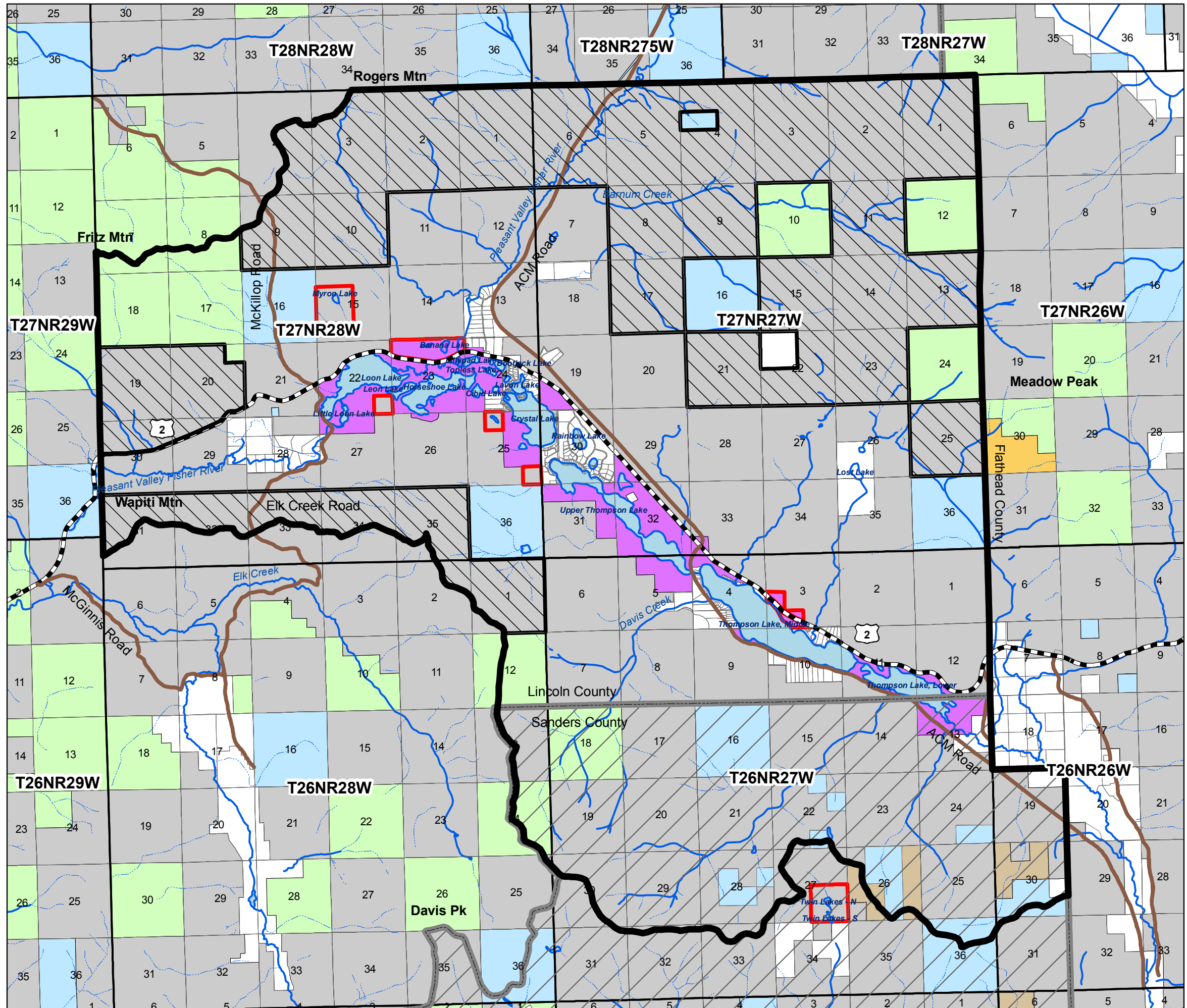


Scale In Miles
0 0.4 0.8 1.2 1.6



Thompson Chain of Lakes Neighborhood Plan Potential Trade or Acquisition Lands and Recreation Reserve Lands

FWP, Plum Creek, and/or DNRC may want to trade lands or do other land transactions to achieve management objectives.



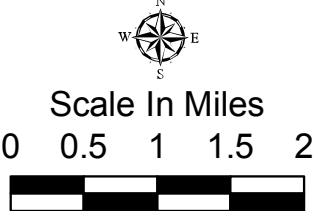
Legend

Potential Trade Parcels	US Highway 2
Land Owner	Major Roads
PCT	Ownership
STATE TRUST LANDS*	PVT/Others
FWP	PCT
Recreation Reserve Lands**	USFS; USFWS
Planning Boundary	STATE TRUST LANDS
County Line	FWP
Sanders County	STOLTZE
Lakes	STIMSON
River/Perennial Stream	Water
Intermittent Stream	

*Note:
DNRC Trust Land Management Division Real Estate Management Plan considers sale (land banking), or exchange of Trust Lands appropriate under certain circumstances. Eligibility for sale or exchange is determined case by case based on review of applicable statutes, rules, and policy.

**NOTE:
These lands do not necessarily represent any unique or particularly important wildlife habitat features but do have local interest for recreation. Plum Creek has no plans to sell the identified properties within the next 5 years. However, circumstances can change and should Plum Creek wish to list these properties for sale with a broker, real estate agent or multiple listing service prior to March 31, 2015, Plum Creek agrees to first provide FWP not less than 180 days advanced notice of the intent to list. This accommodation does not imply whether a sale to FWP will be ultimately possible, nor does it preclude sales to third parties including but not limited to affiliated entities, adjacent landowners or other interested parties.

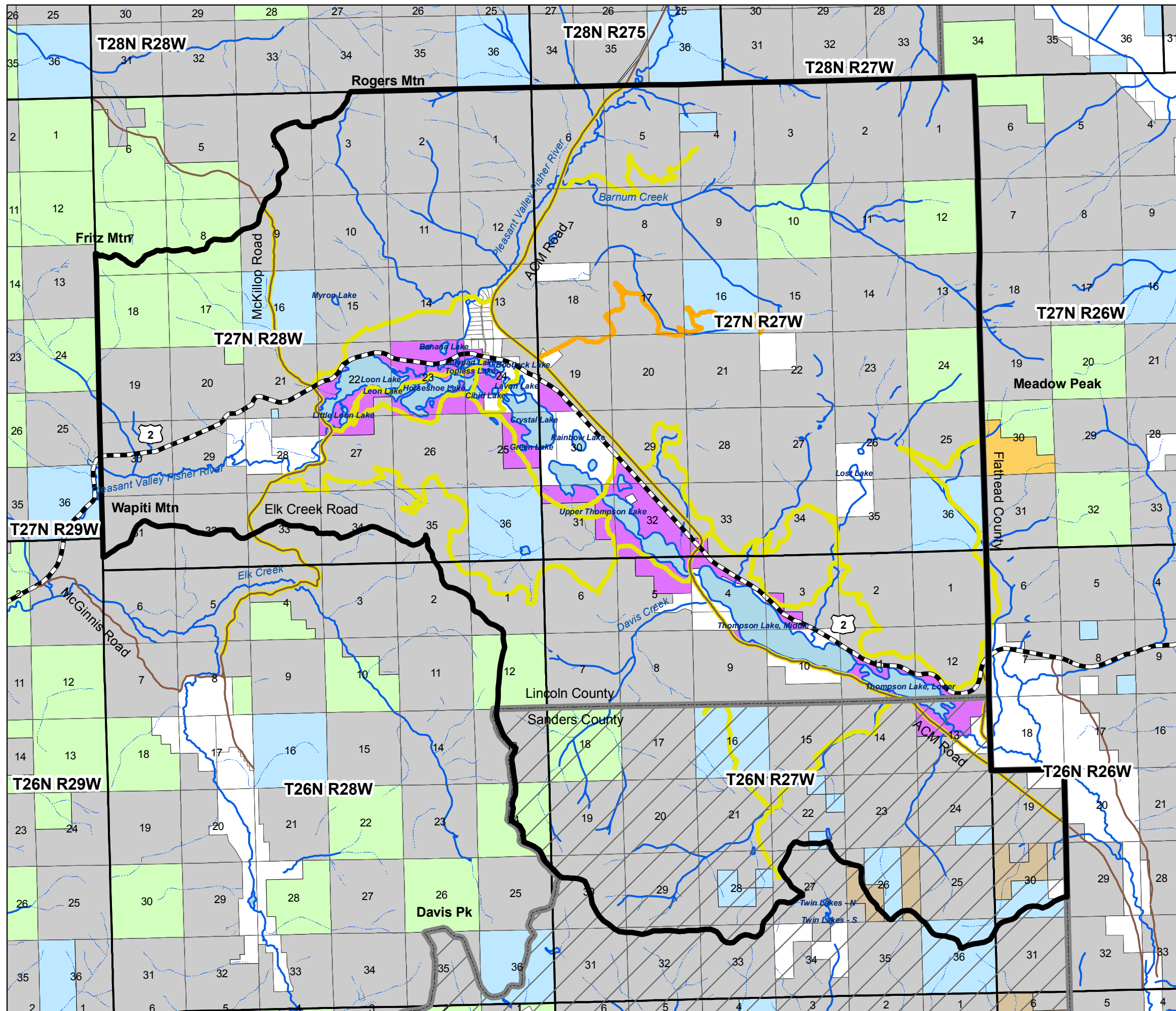
That portion of Plan area in Sanders County is for informational purposes only.



B-2

Thompson Chain of Lakes Neighborhood Plan

Conceptual Transportation Map



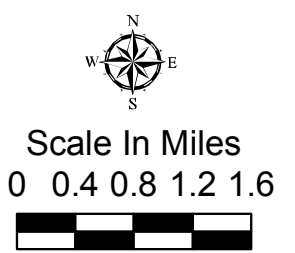
Legend

- Planning Boundary
- Conceptual Secondary & Public Access Roads
- Conceptual Open Seasonally for Motorized & Year Round for Non-motorized
- County Line
- Sanders County
- US Highway 2
- Major Roads
- Lakes
- River/Perennial Stream
- Intermittent Stream

Ownership

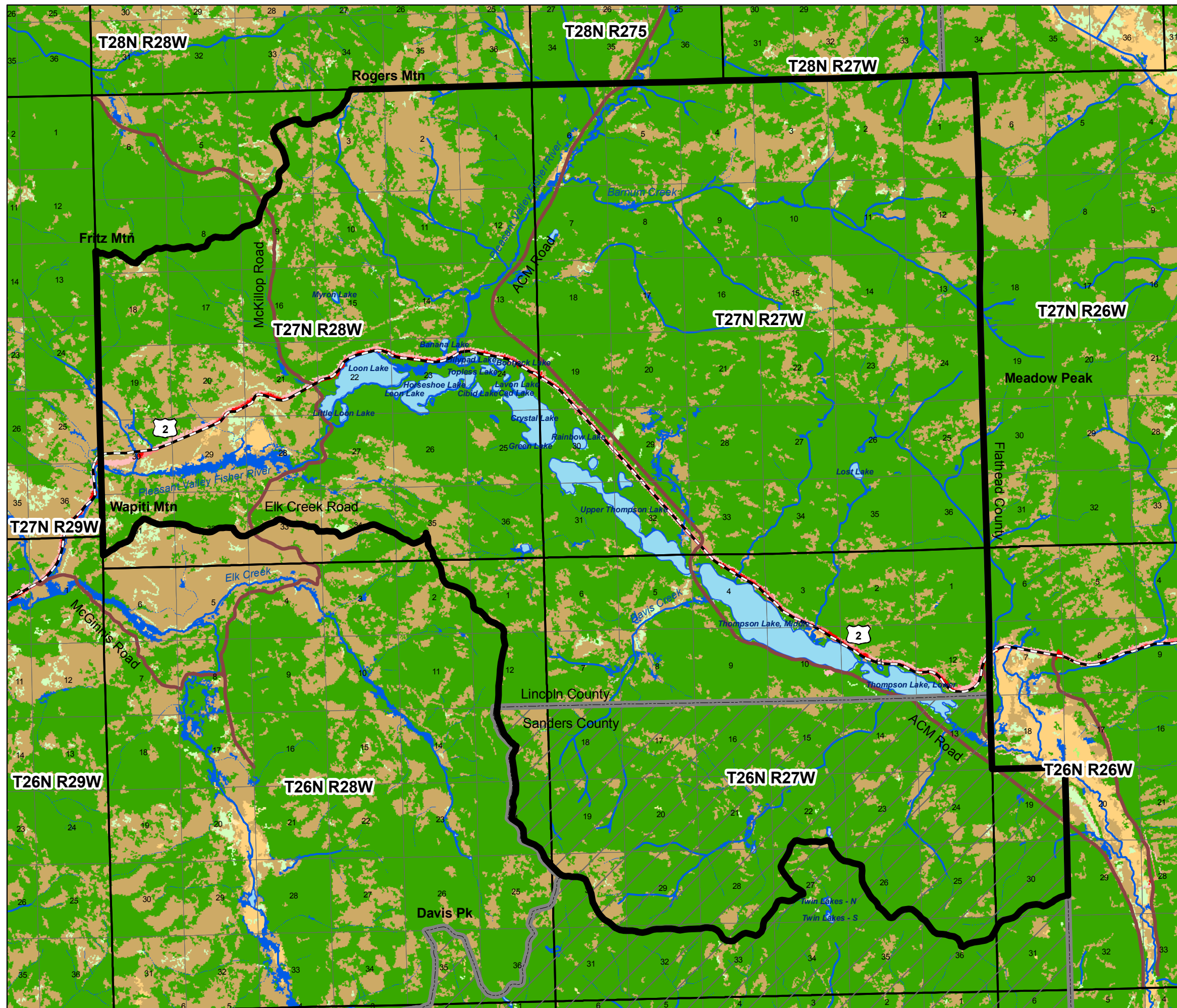
- PVT/Others
- PCT
- USFS; USFWS
- STATE TRUST LANDS
- FWP
- STOLTZE
- STIMSON
- Water

That portion of Plan area in Sanders County is for informational purposes only.



B-1

Thompson Chain of Lakes Neighborhood Plan National Land Cover Database 2001



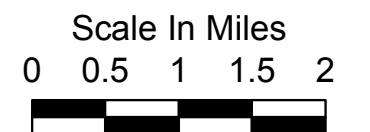
Legend

- Planning Boundary
- County Line
- Sanders County
- US Highway 2
- Major Roads
- Lakes
- River/Perennial Stream
- Intermittent Stream

NLCD Info

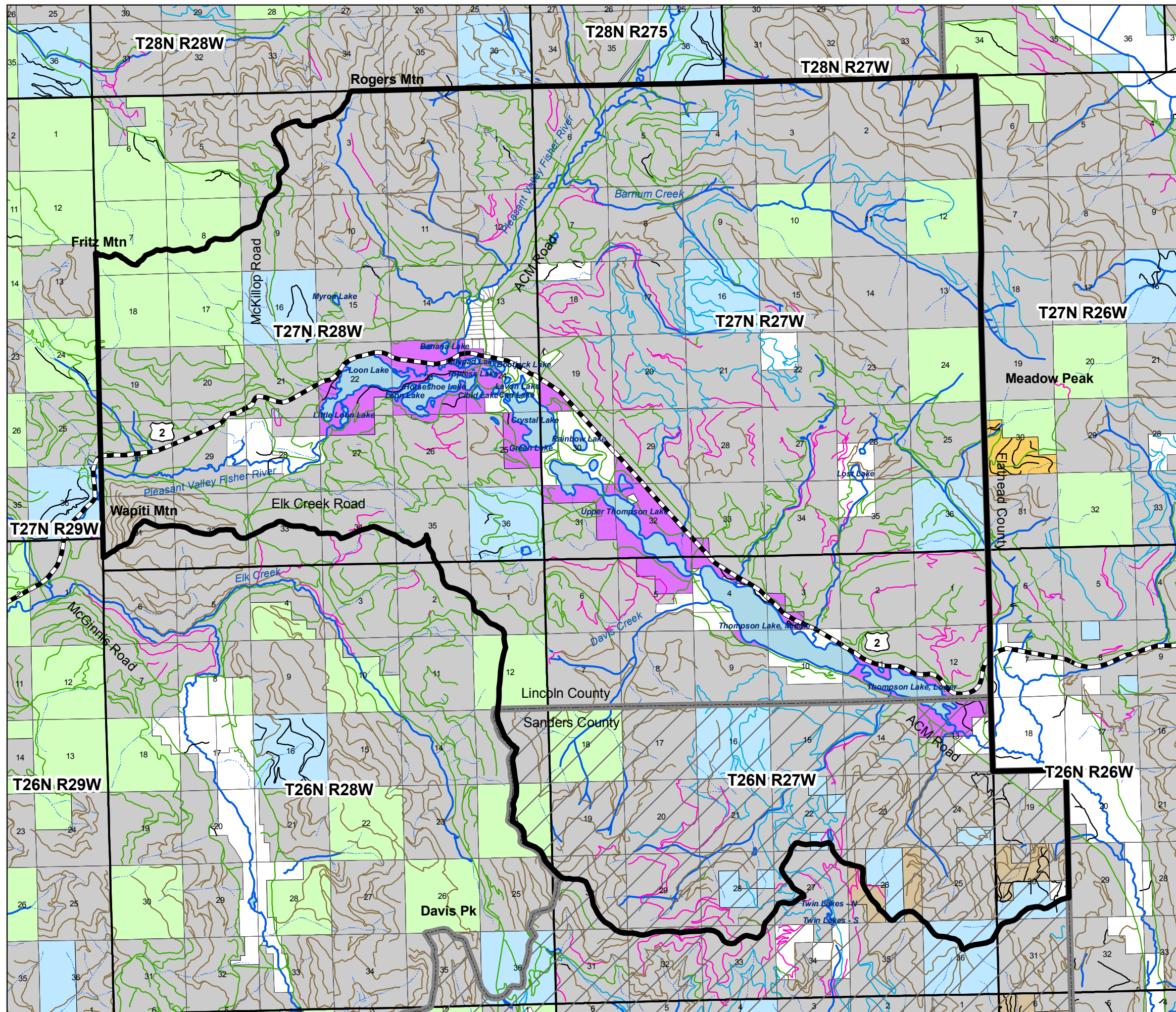
- Open Water
- Developed, Open Space
- Developed, Low Intensity
- Developed, Medium Intensity
- Developed, High Intensity
- Barren Land (Talus, gravel pits, etc.)
- Deciduous Forest
- Evergreen Forest
- Mixed Forest
- Shrub or Small Trees
- Grassland
- Pasture or Hay
- Cultivated Crops
- Wetlands

That portion of Plan area in Sanders County is for informational purposes only.



A-7

Thompson Chain of Lakes Neighborhood Plan Transportation Map



Legend

- Planning Boundary
- County Line
- Sanders County
- US Highway 2

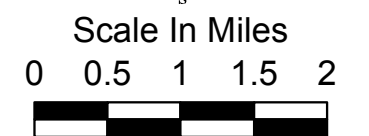
Road Closure Status

- Other
- Open
- Gated Seasonally
- Gated Year Round
- Closed Barrier
- Unknown

Ownership

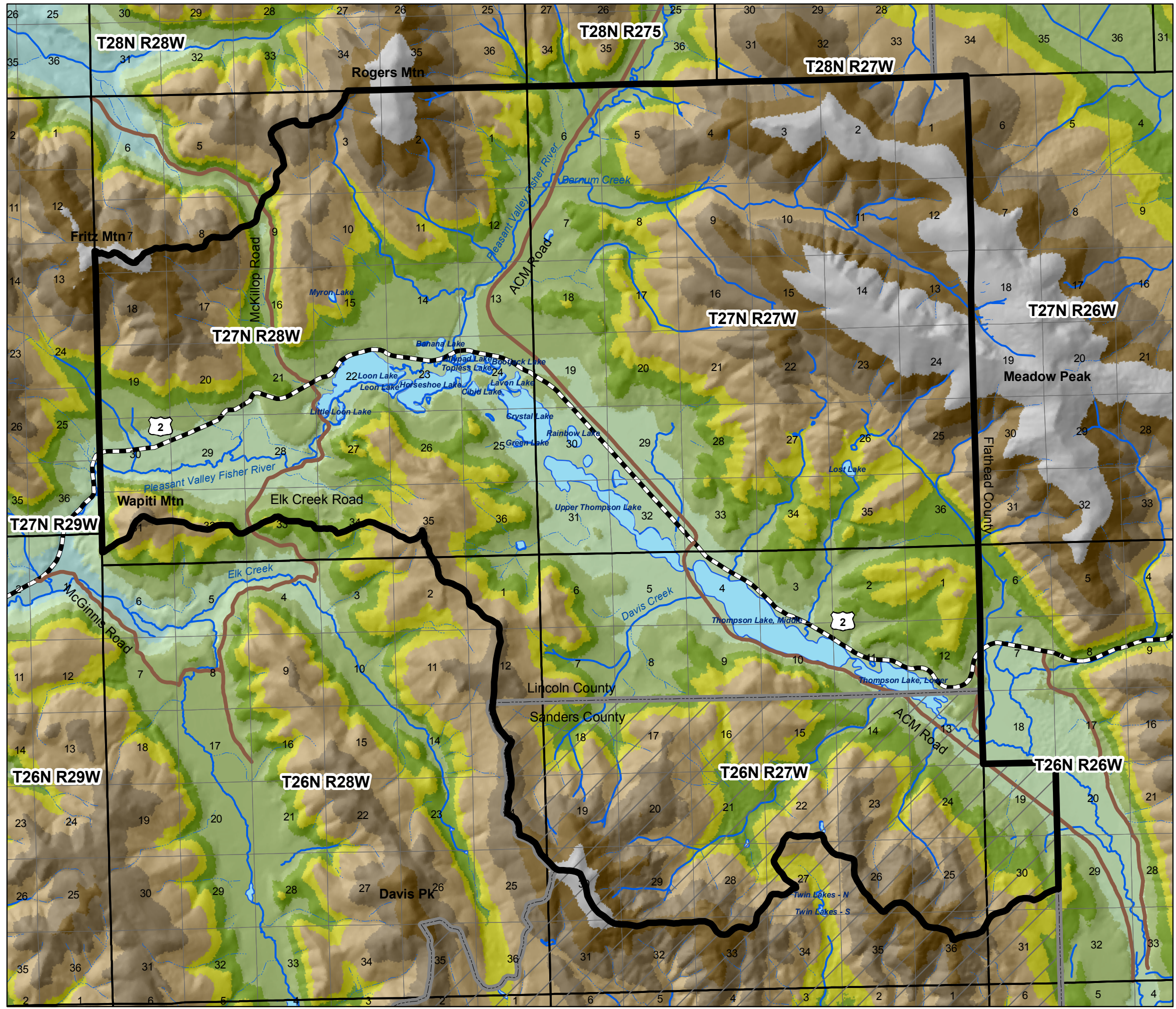
- PVT/Others
- PCT
- USFS; USFWS
- STATE TRUST LANDS
- FWP
- STOLTZE
- STIMSON
- Water

That portion of Plan area in Sanders County is for informational purposes only.



A-6

Thompson Chain of Lakes Neighborhood Plan Site Physiography



Data	
Total Acres	65,567
Acres > 25% Slope	30,044
Major Lakes	
Loon Lake	
Horseshoe Lake	
Leon Lake	
Lilypad Lake	
Bootjack Lake	
Lavon Lake	
Crystal Lake	
Rainbow Lake	
Lower Thompson Lake	
Middle Thompson Lake	
Upper Thompson Lake	
Myron Lake	
Lost Lake	
Major Streams	
Pleasant Valley Fisher River	
Elk Creek	
Davis Creek	
Barnum Creek	

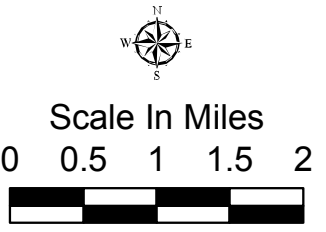
Legend

- Planning Boundary
- County Line
- US Highway 2
- Major Roads
- Lakes
- River/Perennial Stream
- Intermittent Stream
- Sanders County

Elevation (Feet)

- < 3,200
- 3,201 - 3,400
- 3,401 - 3,600
- 3,601 - 3,800
- 3,801 - 4,000
- 4,001 - 4,500
- 4,501 - 5,000
- 5,001 - 5,500
- 5,501 +

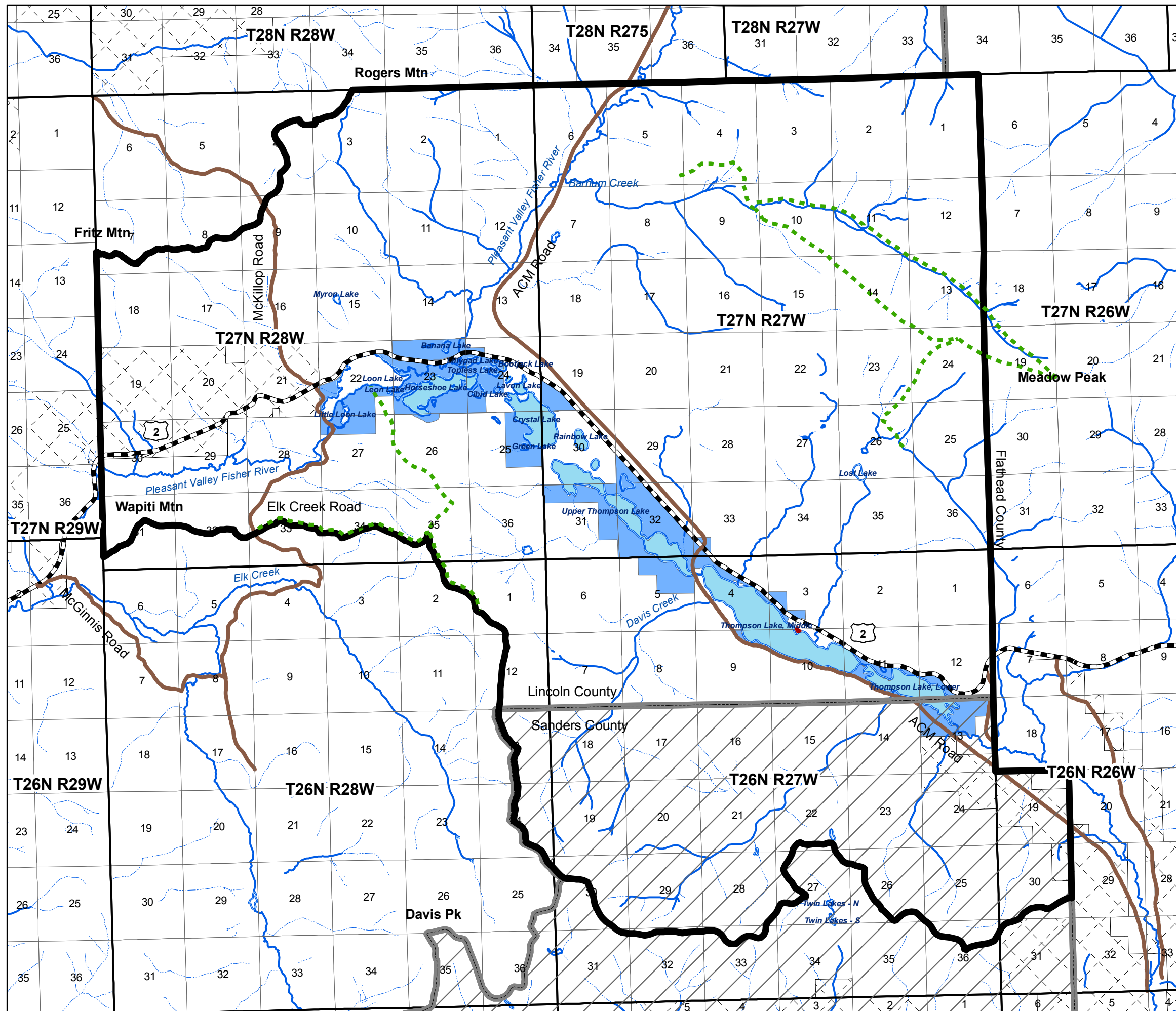
That portion of Plan area in Sanders County is for informational purposes only.



A-5

Thompson Chain of Lakes Neighborhood Plan

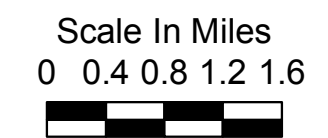
Recreation Map



Legend

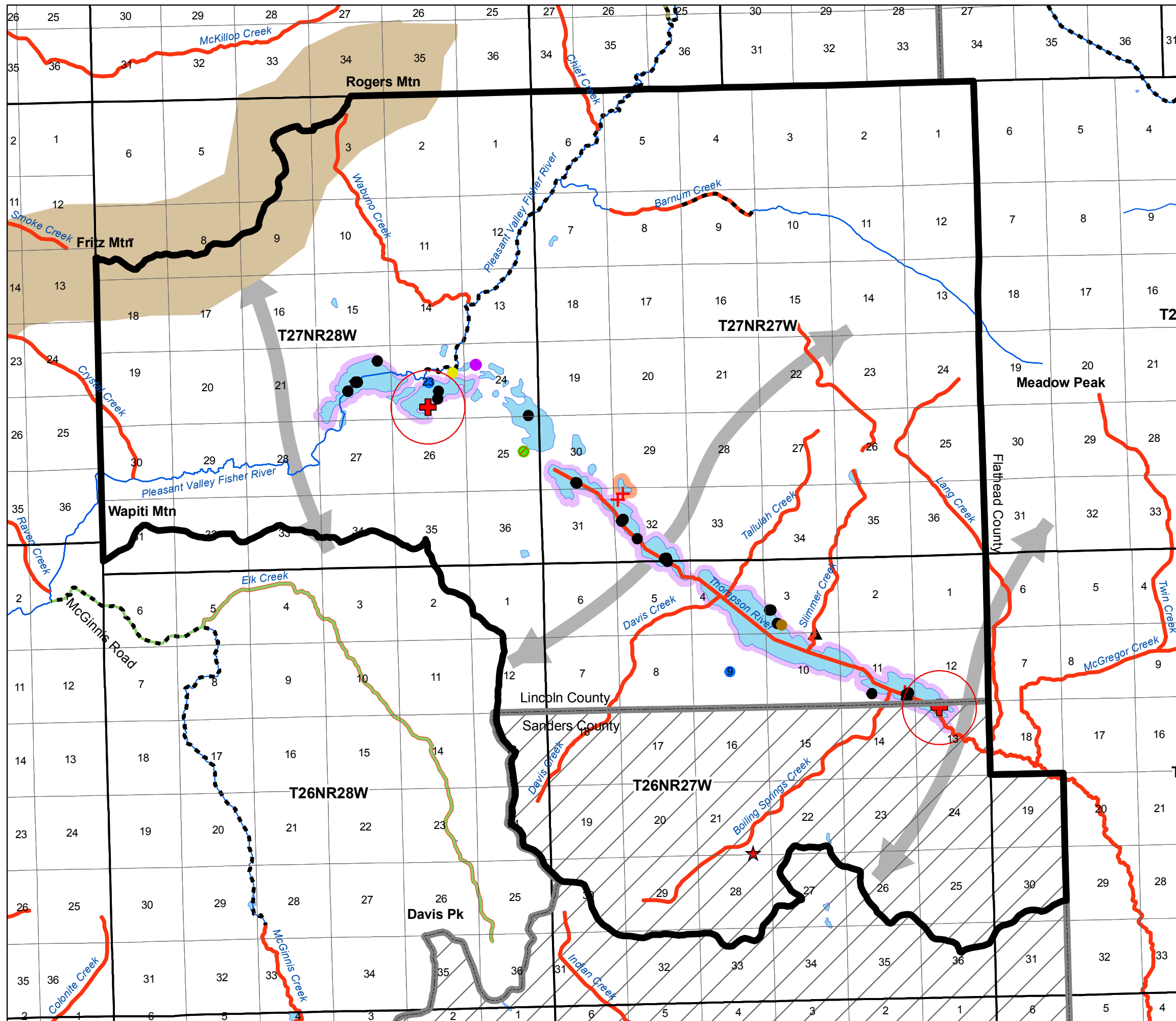
- Planning Boundary
- Conceptual Trail System
- Logan State Park (Middle Thompson Lake)
- Thompson Chain of Lakes Fishing Access Site Complex
- Thompson - Fisher Conservation Easements
- County Line
- Sanders County
- US Highway 2
- Major Roads
- Lakes
- River/Perennial Stream
- Intermittent Stream

That portion of Plan area in Sanders County is for informational purposes only.



Thompson Chain of Lakes Neighborhood Plan

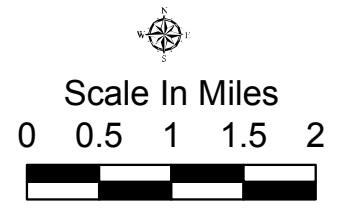
Unique Features Map



Legend

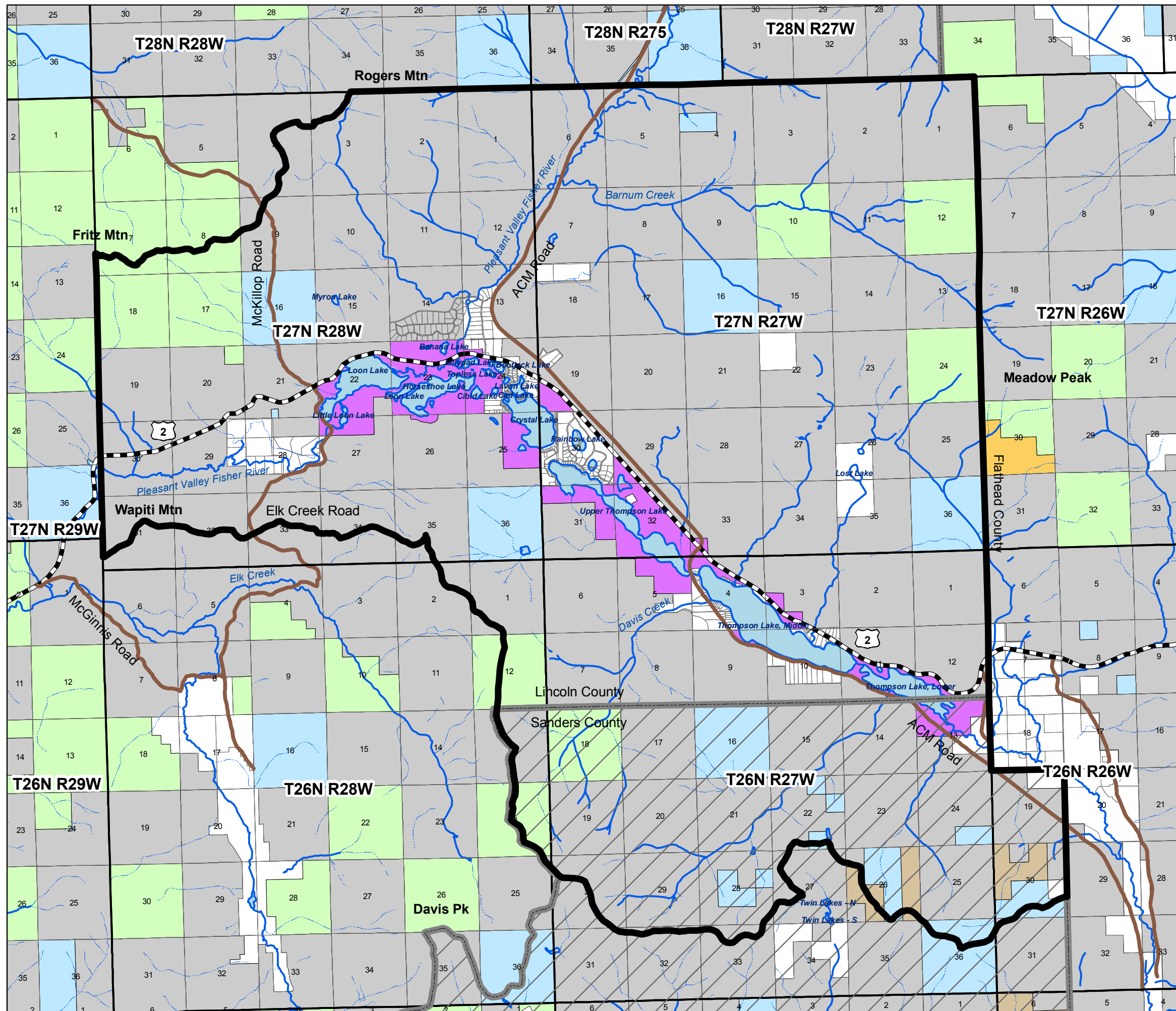
- Planning Boundary
- County Line
- Sanders County
- Point Observations**
 - American Bittern
 - Alder Flycatcher
 - Bald Eagle
 - Common Loon
 - Great Blue Heron
 - Western Pearlshell
 - Western Toad
 - Boiling Springs
- FWP Fish SOC Distributions 11/19/2009**
 - Columbia Basin Redband Trout
 - Torrent Sculpin
 - Westslope Cutthroat Trout
 - Other FWP Fish Distribution Streams
- Plant SOC**
 - Slender Cottongrass
 - Pod Grass
 - Water Bulrush
 - Scorpidium moss
- Species Occurance**
 - Common Loon
 - Western Toad
 - Bald Eagle Nest 0.5 mile Buffer
 - Regional Wildlife Linkage Corridor
 - General Locations of likely Big Game Movement Corridors

That portion of Plan area in Sanders County is for informational purposes only.



A-3

Thompson Chain of Lakes Neighborhood Plan Ownership Map



Ownership	Acres
PVT/Others	2,893
PCT	48,951
USFS	4,911
STATE TRUST LANDS	4,189
FWP	2,440
STIMSON	422
Water	1,764
Total	65,570

Legend

Planning Boundary	PVT/Others
County Line	PCT
Sanders County	USFS; USFWS
US Highway 2	STATE TRUST LANDS
Major Roads	FWP
Lakes	STOLTZE
River/Perennial Stream	STIMSON
Intermittent Stream	Water

That portion of Plan area in Sanders County is for informational purposes only.



Scale In Miles

0 0.5 1 1.5 2



A-2